

PRODUCT TECHNICAL DATASHEET

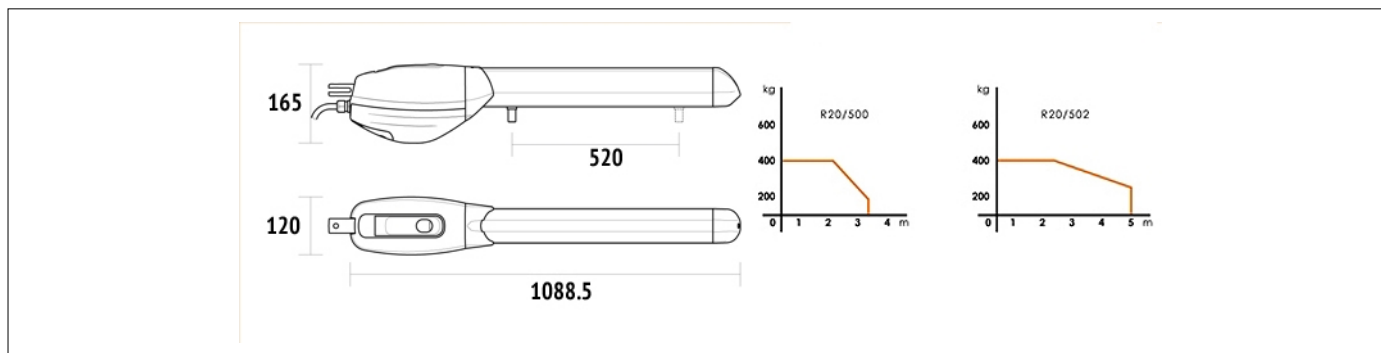
R20/500



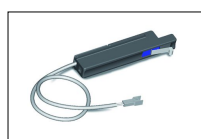
CODE	DESCRIPTION	PCS/PALLET
R20/500	Electromechanical actuator 230V AC irreversible ideal for swing gates with leaf up to 3,5 m, with 1 microswitch, complete with fixing plates.	36

PRODUCT TECHNICAL SPECIFICATIONS	
Power line supply	230V AC - 50Hz
Motor power supply	230V AC
Power rating	200W
Frequency of use	40%
Thrust	2500N
Operating temperature	-20+55°C
Protection level	IP44
Reductor Type	Irreversible
Manoeuvre speed	1,66 cm/s
Opening time	27 s
Stroke	520 mm
Motor thermal protection	140°C
Incorporated condenser	15 µF
Limit switch	Microswitch in opening (optional in closing)
Encoder	-
Maximum dimension product in mm (L x W x H)	1088,5 x 120 x 165
Product weight packed (Kg)	10,6
Number items per pallet/box	36

PRODUCT DIMENSIONS AND PREPARING FOR INSTALLATION



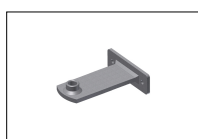
PRODUCT ACCESSORIES



MC770
Kit optional microswitch in closing with cable series R20.



MC780
Kit 2 mechanical stop R20 series.



KT201/R
Screw-welded long front bracket.



KT205
Kit 3 hinge plates long series, to weld.



KT205/R
Kit of screw-adjustable long rear bracket and screw-welded long front bracket.



R99/C/001AL
Signboard "Automatic Opening" Aluminium version.



R99/C/001
Signboard "Automatic Opening".